



**TSC**  
yarns

• TAHKI STACY CHARLES



**FILATURA  
DI CROSA**

## LUGANO MEN'S FAIR ISLE ZIPPED JACKET

designed by FDC Design Studio



INTERMEDIATE

**SIZES** Small (**Medium**, Large, XL)

### MATERIALS

- 18 (**21**, 24, 27) balls Filatura Di Crosa **ZARA** 100% extrafine merino wool (1.75oz/50g; 137yds/125m) in **color #1490 dark denim (A)**
  - 1 ball in **color #1494 light grey (B)**
  - 1 ball in **color #1396 off-white (C)**
  - One pair size 6 (4mm) needles
- OR SIZE TO OBTAIN GAUGE**
- One pair size 4 (3.5mm) needles
  - Cable needle (cn)
  - One 28 $\frac{1}{4}$  (**29**, 29 $\frac{3}{4}$ , 30 $\frac{1}{2}$ )"/72 (**73.5**, 75.5, **77.5**)cm zipper
  - Yarn needle

### KNITTED MEASUREMENTS

**Chest** 40 $\frac{1}{2}$  (**44**, 47 $\frac{1}{2}$ , **51**)"/103 (**112**, 120.5, **129.5**)cm

**Length** 29 $\frac{1}{4}$  (**30 $\frac{3}{4}$** , 32 $\frac{1}{4}$ , **33 $\frac{3}{4}$** )"/74.5 (**78**, 82, **85.5**)cm

### GAUGE

28 sts and 25 rows = 4"/10cm in Stockinette stitch on larger needles

**TAKE TIME TO CHECK GAUGE**

### SPECIAL ABBREVIATIONS

**C4F:** Slip 2 sts to cn and hold in front, k2, p2 from cn.



**C4B:** Slip 2 sts to cn and hold in back, p2, k2 from cn.

**M1K:** Make 1 knitwise (inc) – Lift strand between needles to LH needle and knit strand through the back loop, twisting it to prevent a hole.

### PATTERN STITCHES

**Stockinette stitch (St st)** Knit on RS, purl on WS.

**K1, p1 rib** (multiple of 2 sts + 1)

**K2, p2 rib** (multiple of 4 sts + 2)

### Cable Pattern (multiple of 10 sts + 2)

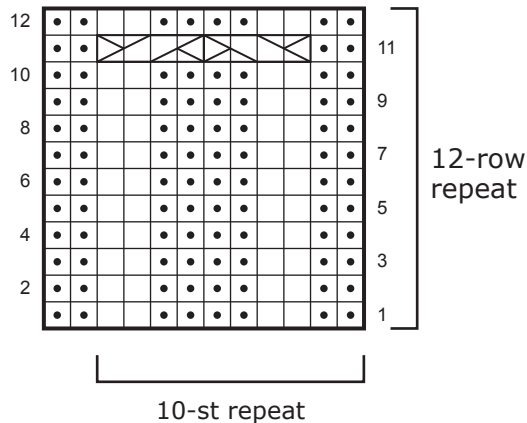
**Rows 1, 3, 5, 7, 9 (RS)** \* P2, k2, p4, k2; rep from \* to last 2 sts, p2.

**Row 2 and all even number rows (WS)** K2, \* p2, k4, p2, k2; rep from \* to end.

**Row 11** \* P2, C4F, C4B; rep from \* to last 2 sts, p2.

Rep Rows 1-12 for Cable Pattern.

#### CABLE PATTERN CHART



#### KEY

□ Knit on RS, purl on WS

● Purl on RS, knit on WS

⧻ C4F: Slip 2 sts to cn and hold in front, k2, k2 from cn.

⧻ C4B: Slip 2 sts to cn and hold in back, k2, k2 from cn.

**NOTES:** Keep first and last st in St st for selvedge where specified. Work Fair Isle chart in St st.

### BACK

With A and smaller needles, cast on 142 (**154**, 166, **178**) sts.

**(RS)** Begin k2, p2 rib (starting with p2); work even until piece measures 2¾" from beg, end with a WS row.

**(RS)** Change to larger needles and work Rows 1-34 of Fair Isle chart, keeping 1 selvedge st each side and starting from the 1<sup>st</sup> (**14<sup>th</sup>**, 11<sup>th</sup>, **9<sup>th</sup>**) st of chart.

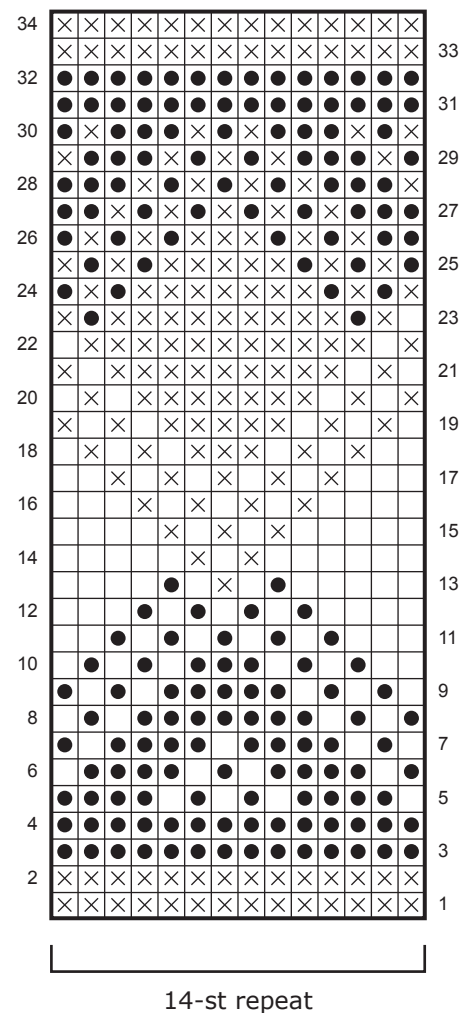
**(RS)** Change to Cable Pattern, inc 1 st each side on 1<sup>st</sup> row, keep 1 selvedge st each side and start from 1<sup>st</sup> (**10<sup>th</sup>**, 7<sup>th</sup>, **5<sup>th</sup>**) st of chart.

Work even until piece measures 19 (**19¾**, 20½, **21¼**)" from beg, end with a WS row.

### Shape Armholes

**(RS)** Bind off 5 sts at beg of next 2 rows, 3 sts at beg of next 2 rows, then 2 sts at beg of next 2 rows – 124 (**136**, 148, **160**) sts rem.

#### FAIR ISLE CHART



#### COLOR KEY

● A (dark denim)

⊗ B (light grey)

□ C (off-white)

Work even until Armholes measure 10¼ (**11**, 11¾, **12½**)" from beg.

Bind off all sts.

### LEFT FRONT

With A and smaller needles, cast on 74 (**78**, 82, **90**) sts.

**(RS)** Begin k2, p2 rib (starting with p2); work even until piece measures 2¾" from beg, end with a WS row.

**(RS)** Change to larger needles and work Rows 1-34 of Fair Isle chart, keeping 1 selvedge st each side and starting from the 1<sup>st</sup> st of chart.

**(RS)** Change to Cable Pattern, keep 1 selvedge st each side and start from 1<sup>st</sup> (**7<sup>th</sup>**, 1<sup>st</sup>, **5<sup>th</sup>**) st of chart. Work even until piece measures 19 (**19¾**, 20½, **21¼**)" from beg, end with a WS row.

### Shape Armhole

**(RS)** Bind off 5 sts at beg of next RS row, 3 sts at beg of next RS row, then 2 sts at beg of next RS row – 64 (**68**, 72, **80**) sts rem.

Work even until Armhole measures 6¾" from beg, end with a RS row.

### Shape Neck

**(WS)** Bind off 8 sts at beg of next WS row, 6 sts at beg of next WS row, 4 sts at beg of next WS row, 2 sts at beg of next 2 (**2**, **2**, **3**) WS rows, then 1 st at beg of next 3 (**4**, **5**, **6**) WS rows – 39 (**42**, 45, **50**) sts rem.

Work even until Armhole measures 10¼ (**11**, 11¾, **12½**)" from beg.

Bind off all sts.

### RIGHT FRONT

Work as for LEFT FRONT, reversing all shaping.

### SLEEVES

With A and smaller needles, cast on 52 (**56**, 60, **64**) sts.

**(RS)** Begin k2, p2 rib (starting with p2), keeping 1 selvedge st each side; work even until piece measures 2¾" from beg, end with a WS row.

**(RS)** Change to larger needles and Cable Pattern, inc 30 (**32**, 32, **34**) sts evenly across first row – 82 (**88**, 92, **98**) sts.

Work even until piece measures 4" from beg, end with a WS row.

### Shape Sleeve

**Inc Row (RS)** K1, m1k, work to last st, m1k, k1.

Rep Inc Row every 10<sup>th</sup> (**8<sup>th</sup>**, 8<sup>th</sup>, **8<sup>th</sup>**) row, 10 (**11**, 12, **13**) more times – 104 (**112**, 118, **126**) sts.

Work even until piece measures 20 (**20¾**, 21¾, **22½**)" from beg, end with a WS row.

### Shape Cap

**(RS)** Bind off 5 (**6**, 6, **6**) sts at beg of next 2 rows, 3 sts at beg of next 6 rows, 2 sts at beg of next 4 (**4**, 4, **6**) rows, dec 1 st each side of every RS row 17 (**18**, 19, **21**) times, then bind off 2 (**3**, 4, **4**) sts at beg of next 4 rows – 26 sts rem. Bind off all sts.

### FINISHING

Block pieces to measurements. Sew Shoulder seams.

### Collar

With RS facing, using A and smaller needles, pick up and knit 132 (**136**, 140, **144**) sts evenly around neckline.

**(WS)** Begin k2, p2 rib (starting with p2), keeping 1 selvedge st each side.

Work even for 3½", end with a WS row.

**(RS)** Change to C and continue in k2, p2 rib until Collar measures 6¼" from beg. Bind off all sts in rib.

### Front Bands (make 2)

With RS facing, using A and smaller needles, pick up and knit 227 (**239**, 251, **263**) sts evenly up front edge.

**(WS)** Begin k1, p1 rib; work 6 rows. Bind off all sts in rib.

Fold the collar to inside and stitch in place. Set in SLEEVES; sew side and Sleeve seams. Sew zipper in place. Weave in ends.

### ABBREVIATIONS

beg	begin(ning)
cm	centimeter
dec	decrease(d)(s)(ing)
inc	increase(d)(s)(ing)
k	knit
LH	left-hand
mm	millimeters
p	purl
pm(Pm)	place marker(s)
rem	remain(ing)
rep	repeat(s)(ing)
RS	right side
st(s)	stitch(es)
WS	wrong side

SCHEMATICS ON NEXT PAGE

